



2021 NCHV ANNUAL CONFERENCE

CHARTING THE COURSE:
TOGETHER, APART
JUNE 21-25, 2021

 **NATIONAL COALITION**
for **HOMELESS VETERANS**

Making the Most of the Low Income Housing Tax Credit for Veterans

Panelists:

Deb Burkart
NEF

Ralph Fasano
Concern for Independent Living

Brad Bridwell
Cloudbreak Communities



2021 NCHV Annual Conference

LIHTC AND VETERAN HOUSING

PRESENTED BY: RALPH FASANO, EXECUTIVE DIRECTOR

CONCERN HOUSING

















Presenter: Brad Bridwell

LIHTC for Veteran Housing

**2021 NCHV
ANNUAL
CONFERENCE**

The NCHV logo is a small icon consisting of a house with a red roof, a white chimney, and a white body, with a white arrow pointing upwards from the base of the house.

Developers of Service Enriched Affordable Housing for
Veterans and Other Special Needs Groups

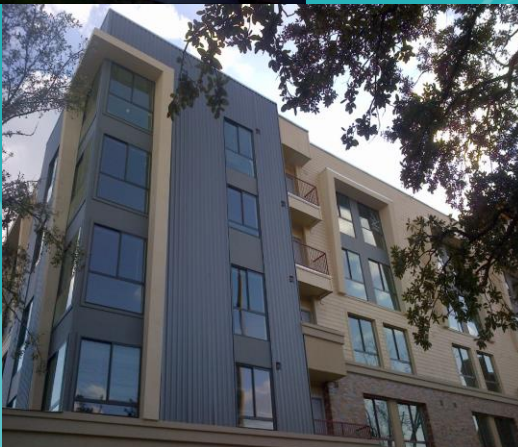


Locations

- Phoenix, AZ
- Inglewood, CA
- Las Vegas, NV
- Houston, TX
- Oahu, HI



2021 NCHV
ANNUAL
CONFERENCE



LIHTC Project Overview

A brief overview of Cloudbreak Communities' LIHTC projects

Arizona State LIHTC Projects

An overview of Arizona housing development strategy and its advantages

Replication Blueprint

What can your community do?



LIHTC Projects Overview

- Phoenix, AZ
 - Victory Place Phase III – 75 Units
 - Victory Place Phase IV – 96 Units
- Inglewood, CA
 - Westside Residences II – 196 Units
- Houston, TX
 - Travis Street Plaza – 192 Units



Houston, TX

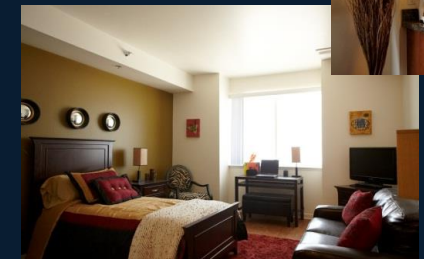
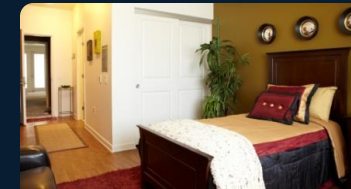
- Travis Street Plaza – 192 Units
- Master Planned Campus – 534 Units
 - Midtown Terrace – 286 Units
 - Light Rail Lofts – 56 Units
- 100 Project-Based VASH
- Primary Support Services Partners
 - Houston VA
 - U.S.VETS





Inglewood, CA

- Westside Residences II – 196 Units
- Master Planned Campus – 497 Units
 - Westside Residence Hall – 301 Units
- 50 Project-Based VASH
- Primary Support Services Partners
 - West LA VA
 - U.S.VETS
 - FAAM



2021 NCHV
ANNUAL
CONFERENCE



Phoenix, AZ

- Victory Place Phase III – 75 Units
- Victory Place Phase IV – 96 Units
- Master Planned Campus – 225 Units
 - Victory Place Phase I – 34 Units
 - Victory Place Phase II – 20 Units
- 15 Project-Based VASH
- Primary Support Services Partners
 - Phoenix VA
 - Community Bridges





Replication Blueprint

- Know your Housing Finance Agency - <https://www.ncsha.org/housing-help/>
- Know your Continuum of Care - <https://www.hudexchange.info/programs/coc/>
- Advocate for a QAP Set-Aside
- CoC, get a list of developers from your State Housing Finance Agency and engage developers
- Developers get a list of CoC funded providers and reach out to discuss housing needs
- Get the strategy in all your plans





Pitfalls and Planning

- Supplement Services
 - Mainstream supports are not enough, supplement with Navigation and/or peer services for day to day supports
- Explore Project Based with your PHAs (can be leveraged in QAP)
- Ensure screening criteria meets the population's actual need
- Pay attention to Coordinated Entry Systems to ensure no bottlenecks



Brad Bridwell

Director of National Operations

bbridwell@Cantwell-Anderson.com

602-317-8582

THANK YOU!



Q&A



Contact Information

Deb Burkart

NEF

dburkart@nefinc.org

Ralph Fasano

Executive Director, Concern for Independent Living

rfasano@concernhousing.org

Brad Bridwell

Director of National Operations, Cloudbreak Communities

[bbridwell <bbridwell@cantwell-anderson.com>](mailto:bbridwell@cantwell-anderson.com)



THANK YOU



2021 NCHV
ANNUAL CONFERENCE